



Australian
National
University

**CHATHAM
HOUSE**

The Royal Institute of
International Affairs



INVESTING IN GENDER EQUALITY AT
THE GROUP OF 20 LEADERS SUMMIT:
AUSTRALIA TO TURKEY

24 SEPTEMBER 2014

Chatham House
International Economics

ANU College of
Asia & the Pacific



MESSAGE FROM THE DIRECTOR

WELCOME

The School of International, Political and Strategic Studies and its constituents have a long and proud history of advancing the study and practice of international relations and strategic studies in Australia. The School houses the world's foremost collection of experts working on the international, political, societal, diplomatic and strategic affairs of Asia and the Pacific.

As one of the pre-eminent Schools in Asian and Pacific affairs, we play an important role in providing academic and policy advice to government and policymakers to determine the direction of Australia in international affairs. We are delighted to partner with Chatham House, one of the world's leading think tanks in international affairs, for the first time to deliver this policy forum: "Investing in Gender Equality at the Group of 20 Leaders' Summit: Australia to Turkey".

With Australia hosting the Group of 20 (G20) Leaders' Summit in Brisbane later this year, this policy forum will contribute to the important conversation on incorporating gender related issues within the G20. This forum is the first of its kind in focusing on issues of gender equality in the G20 and we are proud to collaborate in bringing this event to representatives from government, the diplomatic community and the academic community with support from Chatham House, the ANU Gender Institute, the Department of the Prime Minister and Cabinet and the Asia Foundation.

I warmly welcome all our speakers and delegates to Canberra and the Australian National University. I hope you enjoy the event and take this opportunity to become better acquainted with the wealth of expertise the School and University have to offer in research, education and policy engagement in international affairs, Asia-Pacific politics, gender, and the Group of 20.

Michael Wesley

Professor Michael Wesley

Professor of National Security

Director

School of International, Political & Strategic Studies

ANU College of Asia & the Pacific

The Australian National University



MESSAGE OF SUPPORT



MS GILL MARCUS

Governor of the South African Reserve Bank

Ms. Gill Marcus has been the Governor of South African Reserve Bank since November 9, 2009. She was a Member of Parliament from 1994 to 1999 and the former Deputy Minister of Finance and former Deputy Governor of the South African Reserve Bank. She is a Professor in Policy, Leadership and Gender Studies at the Gordon Institute of Business Science and on the Advisory Board of the Auditor General. Ms. Marcus is holder of the Chair of Policy, Leadership and Gender Studies at the Gordon Institute of Business Science. She is a board member of International Marketing Council. Ms. Marcus holds a B. Com (Unisa).

“In the years since the Global Financial Crisis, central banks have been navigating complex and challenging times. As we continue to steer our collective way through them, it is vital that we hear, consider and learn from, as many perspectives and experiences as possible. Forums such as these, which focus on increasing the influence of women in global economic governance, are therefore invaluable in building our collective understanding. I wish the event and the participants all success and look forward to hearing the outcomes of the deliberations.”

POLICY FORUM OVERVIEW

This policy forum is co-hosted by the Asia-Pacific College of Diplomacy in the School of International, Political and Strategic Studies in the College of Asia and the Pacific, the Australian National University (ANU) Gender Institute and the International Economics department of Chatham House, the Royal Institute of International Affairs is timed to precede the Canberra meeting of the G20 Sherpas, which will take place on 30 September and 1 October. Australia took over from Russia as the host of the Group of 20 in December 2013 and the Leaders' Summit will take place in Brisbane, Queensland, on 15 and 16 November 2014, after which Turkey will become the next host.

The aim of this forum is to provide advice to the Australian and Turkish Sherpas on possible investments the G20 to advance gender equality in its pursuit of sustainable, balanced and inclusive economic growth. At the G20 Summit in Los Cabos in 2012, G20 Leaders committed “to take concrete actions to overcome the barriers hindering women’s full economic and social participation and to expand economic opportunities for women in G20 economies”. This included committing firmly “to advance gender equality in all areas, including skills training, wages and salaries, treatment in the workplace, and responsibilities in care-giving”.

The Australian G20 year could start a dialogue on how to implement this commitment to gender equality in the context of growth targets that can be further developed by Turkey. This will be a world-first event focusing on questions of gender equality relating to the G20 as a forum, including representation of women in G20 processes over the last five years, the policy agenda to be implemented by G20 members at the domestic level and the possibilities for coordinated action leading to the achievement of the 2 per cent growth target.

This forum will focus on several priorities for the Brisbane Summit, including female participation in the formal labour market and global value chains, entrepreneurship and financial inclusion. It will also focus on progress towards the Millennium Development Goals, an important discussion at the G20 in 2015, in particular goal 3 (gender equality), and the post-2015 framework.

This forum is proudly supported by the ANU Gender Institute, the Asia Foundation and the Department of the Prime Minister and Cabinet. Dr Subacchi is an ANU Research School of Asia and the Pacific Distinguished Visitor

The ANU Chatham House Policy Forum on Gender Equality at the G20 Leaders Summit was supported by the Australian Government Department of the Prime Minister and Cabinet. The opinions, comments and/or analysis expressed are those of the authors and do not necessarily represent the views of the Minister Assisting the Prime Minister for Women or the Australian Government Department of the Prime Minister and Cabinet, and cannot be taken in any way as expressions of Government policy.

PARTNERS AND SUPPORTERS

Chatham House

Chatham House, the Royal Institute of International Affairs is an independent policy institute based in London. The mission is to help build a sustainably secure, prosperous and just world. Founded in 1920, Chatham House engages governments, the private sector, civil society and its members in open debate and confidential discussion on the most significant developments in international affairs.

Chatham House carries out independent and rigorous analysis of critical global, regional and country-specific challenges and opportunities and has been assessed by its peers as the No. 1 think tank outside the US for six consecutive years and No. 2 worldwide for the past three years.

Asia-Pacific College of Diplomacy, School of International Political & Strategic Studies

In an increasingly complex globalised world, diplomatic skills are valued more highly than ever. Negotiation, network-building, conflict resolution and information literacy comprise the 21st century skillset, essential not only to diplomats, but also policy-makers, civil servants, and leaders in multilateral bodies, international corporations, and non-government organisations.

APCD offers prestigious graduate programs and executive courses to equip individuals and organisations with the professional skills needed to navigate the diplomatic system, and today's globalised institutions, and to effectively and efficiently represent a country or organisation at an international level.

ANU Gender Institute

The Gender Institute is an exciting initiative at ANU which provides a focus for existing activity on issues of gender and sexuality and a catalyst to develop and deepen them. The Gender Institute has two distinct but related tasks. One is to support and deepen research, education and outreach on gender and sexuality across the University, in particular promoting collaboration and linkages in this area across the seven Colleges. The second is to support the employment and retention of women and gender diverse people at all levels, in all disciplines, across the University.

Department of the Prime Minister and Cabinet

The Department of the Prime Minister and Cabinet (PM&C) has unique responsibilities and a privileged role. Their principal function is to provide high-quality policy advice to the Prime Minister and the Cabinet on matters that are at the forefront of public and government administration, including domestic and international affairs and, in particular, the implications of proposals for Commonwealth-State relations. By looking over the horizon to the challenges and opportunities of the coming years, PM&C's high-level strategic advice further supports the government in taking all relevant factors into account to make the best possible decisions.

The Asia Foundation

The Asia Foundation is a nonprofit international development organization committed to improving lives across a dynamic and developing Asia. Informed by six decades of experience and deep local expertise, their programs address critical issues affecting Asia in the 21st century—governance and law, economic development, women's empowerment, environment, and regional cooperation. In addition, Books for Asia and professional exchange programs are among the ways they encourage Asia's continued development as a peaceful, just, and thriving region of the world. The Asia Foundation works through a network of offices in 18 Asian countries and in Washington, DC. Working with public and private partners, the Foundation receives funding from a diverse group of bilateral and multilateral development agencies, foundations, corporations, and individuals.

SUMMIT VENUE OVERVIEW

Wednesday 24 September 2014

Parliament House



On the 9th May 1988, after residing in the Old Parliament House from 1927 - 1988, the "New Parliament House" was opened by her Majesty, Queen Elizabeth II. The building design was chosen from a two-stage competition from a process which began in 1978 by the Fraser government. The competition winner was the New York-based architectural company of Mitchell/Giurgola, with the on-site work directed by Italian architect Romaldo Giurgola.

Nested on a hill within the Parliamentary Triangle, Parliament House is an intimate part of Canberra. At the time, Parliament House was the largest construction site in the Southern Hemisphere with ten thousand Australians involved in its construction.

RC Mills Room Chancelry ANU



The RC Mills Room is a Council Suite in the Chancelry Building which was constructed in 1964. The RC Mills Room is of particular significance and has served as the meeting place for the University Council and other important ANU bodies. The RC Mills Room provides seating for 50 people, with Tasmanian blackwood used for the false ceiling, shelving, moulding, doorframes and linings. It is a beautiful grand room with much history and controversy within its walls.

The room was named in honour of Richard Charles Mills (1886-1952), an eminent Professor of Economics and Chairman of the University's Interim Council, who played a leading role in the establishment of the University.

Lotus Hall China in the World Building ANU



The Australian Centre on China in the World is located at the heart of the campus of The Australian National University. It looks north to Black Mountain and is enfolded by the 'dragon vein' of the university, Sullivan's Creek.

The Centre reflects aspects of the vernacular architecture of Australia while achieving a sympathetic engagement with the underlying design principles of the national capital as envisioned by Walter Burley Griffin and Marion Mahoney over a century ago.

AGENDA

Senate Committee Room 1, Parliament House

09.30 - 11.30 **Room 2S1, Parliament House**
Chair: Dr Fiona Jenkins, Gender Institute, Australian National University

Opening Keynote Address:

Senator The Hon Michaelia Cash, Minister Assisting the Prime Minister for Women
'Investing in Gender Equality at the Group of 20 Leaders' Summit, Brisbane 2014'

Introduction of international guests and panel discussion:

Dr Paola Subacchi, Research Director, International Economics, Chatham House
Dr Jeni Klugman, Senior Advisor, World Bank Group and Fellow, Kennedy School Harvard University
HE Dr Shaikha Al Maskari, Al Maskari Holdings, UAE
Ms Meryem Aslan, C20 Turkey

Q & A (under the Chatham House Rule)

Coach transfer to ANU, Mills Room, Chancelry

11.30 - 12.30 **Session One: Gender and Economic Governance**
Professor Margaret Harding, Deputy Vice-Chancellor (Research) Australian National University
Chair: Ms Caitlin Wilson, Assistant Secretary, G20 Development Branch, Department of Foreign Affairs and Trade

- What impact does the representation of women make on the practice of global economic governance?
- Has the participation of women over the last five years changed G20 processes or outcomes, and if so how?
- What measures could be taken to increase the participation of women in G20 processes?

Speakers:

Dr Rangita de Silva de Alwis, Director, Women in Public Service Project (video)
Ms Cynthia Balogh, Austrade
Dr Helen Szoke, Oxfam Australia
Mr John Hendra, UN Women (video)

Q & A and open discussion

12.30 - 13.30 **Lunch Break**

AGENDA

RC Mills Room, Chancelry, ANU

13.30 - 14.30 **Session Two: Increasing Financial Inclusion**
Chair: Mr Mike Callaghan AM, PSM, Lowy Institute
Update on GPFI by **Ms Rebecca Bryant**, Assistant Secretary, Economic Engagement Branch, Department of Foreign Affairs and Trade

- What progress has the G20 made on financial inclusion? What are the gendered implications of the tax reform agenda? Or 2% growth targets?
- What are the legal and social constraints for women in this area?
- What are we measuring and where are the data gaps?

Speakers:

Mr Nicolas Pinaud, Organisation for Economic Cooperation and Development
Ms Varya Davidson, Partner, Strategy&
Dr Li Yuanfang, Research Centre for International Finance, Institute of World Economics and Politics

Q & A and open discussion

14.30 - 15.30 **Session Three: Empowering women and promoting entrepreneurship**
Chair: Ms HK Holdaway, General Manager, G20 Policy Division, Treasury

- What are examples of effective policy from G20 countries and what assistance could they be to developing countries? How do issues of gender inequality play out in relation to value chains?
- What is the relationship of increased female entrepreneurship and the growth of SMEs?
- What constraints exist to prevent women engaging in formal cross-border trade, and are there behind the border trade issues specific to women?

Speakers:

Ms Carol Yost, The Asia Foundation
Ms Suzan Sabancı Dinçer CBE, Chairman and Executive Board Member, Akbank (via video)
Ms Geraldine Chin-Moody, Group Executive, People, Culture and Sustainability, Virgin Australia
Ms Sneha Deshpande, Manager, Strategic Partners, Google Australia and New Zealand

Q & A and open discussion

15.30 - 16.00 **Refreshments**

16.00 - 17.00 **Session Four: Female Participation in Formal Employment, and Socialisation of Unpaid Care Work** (public session televised by Australian Public Affairs Channel APAC)

Chair: Ms Felicity Gerry QC

Speaker:

Dr Jeni Klugman, Senior Advisor World Bank Group and Fellow, Kennedy School Harvard

- What has the latest research told us about the relationship between female participation in formal employment and GDP?
- What progress has the G20 made and what more can G20 members do?
- What should be the response to responsibilities for unpaid care work and time use issues?

AGENDA

RC Mills Room, Chancelry, ANU

Comment:

Ms Ged Kearney, President, Australian Council of Trade Unions (L20)

Ms Holly Ransom, Chief Executive Officer, HRE Global (Y20)

Ms Julie McKay, Executive Director, UN Women Australia (C20)

17.00 - 17.30

Concluding Remarks: The G20 role in meeting MDG3

Chair: Ms Sally Moyle, Principal Gender Adviser, Department of Foreign Affairs and Trade

Speakers:

Professor Eun Mee Kim, Director, Institute for International Development and Human Security (IDHS); Professor, Graduate School of International Studies, Ewha Womans University, Seoul, South Korea

Comment and vote of thanks

Dr Susan Harris Rimmer, Director of Studies, Asia Pacific College of Diplomacy, ANU College of Asia and the Pacific, Australian National University

18.00

Drinks reception hosted at Lotus Hall, China in the World, Australian National University
Hosted by **Professor Veronica Taylor**, Dean of College of Asia and the Pacific, Australian National University

A toast will be proposed to Australian women in economic governance

***Dr Heather Smith**, Deputy Secretary, G20 Sherpa, Department of the Prime Minister and Cabinet

Remarks and thanks

Dr Paola Subacchi, Research Director, International Economics, Chatham House

THE CHATHAM HOUSE RULE

“When a meeting, or part thereof, is held under the Chatham House Rule, participants are free to use the information received, but neither the identity nor the affiliation of the speaker(s), nor that of any other participant may be revealed”.

See more at: <http://www.chathamhouse.org/about/chatham-house-rule/chatham-house-rule-translations#sthash.ReeF1qq4.dpuf>

SPEAKERS

Ms Meryem Aslan

C20 Turkey

Meryem Aslan is currently with Oxfam Turkey. Meryem has worked for over 24 years in integrated programme design and management related to women's rights in developing countries and fragile states. Prior to assuming this post, Meryem served as UNIFEM's Regional Programme director for the East and Horn of Africa Sub-Regional Office. In her capacity as Programme Director for UNIFEM's Afghanistan Office from 2004-2007, Meryem established the Special Fund for Ending Violence against Women (a multi-donor fund managed by the UNIFEM Afghanistan Office), and supported the development of Afghanistan's National Action Plan for Women. Before joining UNIFEM, Meryem was Oxfam Novib's Country Representative in Afghanistan. Meryem's earlier experience includes work with sister UN agencies and other development actors, in Central Asia, the Netherlands, USA, UK and Turkey.

Ms Cynthia Balogh

Austrade

Cynthia is the Austrade National Program Manager for the Women in Global Business program which is a joint initiative of all the Australian State and Territory Governments and the Australian Government through Austrade. Prior to this role she was the MD/GM of management consulting firms in Australia including Chambers Brook and Davidson Trahaire, Australia's largest EAP provider. Cynthia has founded and developed highly successful HR management consulting companies for over 18 years in London, and Central and Eastern Europe expanding operations across several emerging markets. In 2001, Hudson (formerly TMP Worldwide) acquired the company. Cynthia remained as Managing Director of the merged entity until returning to Melbourne in 2002. Prior to her entrepreneurial career, Cynthia worked for the Department of Immigration and Ethnic Affairs where she was posted as First Secretary (Immigration) to the Australian Embassies in Syria and France. She is a regular presenter and speaker at conferences and seminars. She is Chair of the Victorian Multicultural Business Ministerial Council and sits on various Boards. She is a Fellow of the Australian Human Resources Institute.



Mr Mike Callaghan

Lowy Institute

Mike Callaghan is Director of the G20 Studies Centre at the Lowy Institute. Mike has extensive experience on international economic issues. From 2008 until 2012 he was Executive Director (International) in the Treasury and Australia's G20 Finance Deputy. Mike was also the Prime Minister's Special Envoy, International Economy. From 2005–2007 he was Executive Director, Revenue Group in the Treasury. Prior to this position he was at the IMF in Washington DC as an Executive Director. From 1999–2000, Mike was Chief of Staff to the Australian Treasurer, the Hon Peter Costello.



SPEAKERS

Senator the Hon Michaelia Cash

Assistant Minister for Immigration and Border Protection, Minister Assisting the Prime Minister for Women and Senator for Western Australia

Michaelia Cash was elected to the Australian Senate for Western Australia in 2007. Following the 2010 Federal Election, Senator Cash was appointed as Shadow Parliamentary Secretary for the Status of Women and Shadow Parliamentary Secretary for Immigration and in 2012, Senator Cash was also appointed Deputy Manager of Opposition Business in the Senate.

Following the 2013 Federal Election, Senator Cash was appointed as Assistant Minister for Immigration and Border Protection and as Minister Assisting the Prime Minister for Women and was sworn in on Wednesday, 18 September 2013.



Ms Geraldine Chin-Moody

Group Executive, People, Culture and Sustainability, Virgin Australia

Geraldine Chin Moody is Group Executive for People, Culture and Sustainability at Virgin Australia. She is also the Founding Curator of the World Economic Forum's Global Shapers Community in Sydney, Australia, and Board Member of the Australian National Committee for UN Women. Prior to her role at Virgin Australia, Chin Moody was the Chief Operating Officer at Baker & McKenzie, Australia, and a Group Executive Committee Member of the Australian Stock Exchange. She also served as President of the Refugee Advice and Casework Service. Chin-Moody is a Fulbright Scholar and NSW Telstra Business Woman of the Year, and a graduate of Harvard Law School and the Australian National University in Law and Science. She maintains a range of interests, including next generation workforces, women and leadership, human capital development and creating shared value.



Dr Melissa Conley Tyler

Australian Institute of International Affairs

Melissa H. Conley Tyler was appointed National Executive Director of the Australian Institute of International Affairs in 2006. She is a lawyer and specialist in conflict resolution, including negotiation, mediation and peace education. She was previously Program Manager of the International Conflict Resolution Centre at the University of Melbourne and Senior Fellow of Melbourne Law School. She has an international profile in conflict resolution including membership of the Editorial Board of the Conflict Resolution Quarterly. In 2008 Ms Conley Tyler was selected as one of the nation's 1,000 "best and brightest" to participate in the Australia 2020 Summit convened by the Prime Minister to discuss future challenges facing Australia. Later in 2008 she was selected by the Fletcher Alumni Association of Washington D.C. to receive its Young Alumni Award for most outstanding graduate of the Fletcher School of Law & Diplomacy under 40. She is a member of the International Advisory Council of the U.S. Center for Citizen Diplomacy.



SPEAKERS

Ms Varya Davidson

Partner, Strategy&

Varya is the Partner leading Strategy&'s Organisation, Change and Leadership Practice in Australia, New Zealand and Southeast Asia. She specialises in strategic transformation with a focus on the people and organisation dynamics, including using culture to accelerate organisational change. Varya has worked with leading public and private sector organisations across Europe, the Middle East, North and South America and Asia-Pacific. She has been consulting for 17 years. After 11 years based in London, she returned to Australia two years ago and is now living in Sydney. Her recent efforts include supporting the largest post-merger integration in the Australian wealth sector as well as one of the largest public sector reforms in the country. Varya holds a Bachelor of Science, majoring in Physics, and a Bachelor of Laws with first class honours, both from the University of Sydney. She completed her MBA at INSEAD in 1999.



Ms Sneha Deshpande

Manager, Strategic Partners, Google Australia and New Zealand

As a Strategic Partner Manager for Google Australia, Sneha consults Australian & New Zealand publishers to create world-class monetization strategies for their websites. Her core role involves helping publishers big and small, to create a memorable user experience and to derive maximum yield from their websites. Prior to joining Google in January 2011, Sneha was responsible for building and growing revenue from non-transactional channels for eBay Inc. in Malaysia, India and Philippines. As a former AdSense and DART client, Sneha has experience of almost 10 years across multiple integrated marketing communication processes, such as offline (direct /outdoor) and online advertising, corporate branding, corporate and internal communications and media relations.



My message is simple: we need a 21st century mentality for women's economic participation. We need to flush away the flotsam of ingrained gender inequality. We need to, as I like to say, "dare the difference". To "dare" means to take risks, to step out of our cozy comfort zones, to let hope extinguish fear and courage conquer timidity. Ultimately, daring the difference means wedging open the door to the contribution of women—their learning, their labor, and their leadership. The "3 L's" of women's empowerment.

Daring the Difference: The 3 L's of Women's Empowerment
By Christine Lagarde
Managing Director, International Monetary Fund
National Democratic Institute, Washington DC, May 19, 2014

SPEAKERS

Ms Suzan Sabancı Dinçer CBE

Chairperson and Executive Board member, Akbank

Suzan Sabancı Dinçer is the Chairman and Executive Board Member of Akbank. She began her career in banking in 1986 and joined Akbank in 1989. She is a member of the Institute of International Finance Board of Directors and Emerging Markets Advisory Board, Harvard University's Global Advisory Council, Harvard Business School's Global Leaders Circle, and the Harvard Business School Istanbul Advisory Board. Ms. Sabancı Dinçer founded Akbank's International Advisory Board, a platform to discuss and evaluate global and local economic developments and their strategic implications for Turkey. She also sits on the Chatham House Panel of Senior Advisers. She is the Chairperson of the Turkish-British Business Council of Foreign Economic Relations Board of Turkey (DEIK). She is on the Board of Directors of the Global Relations Forum and a TÜSIAD (Turkish Industry and Business Association) member. She is also the Luxembourg Honorary Consul in Istanbul. In 2012, Her Majesty Queen Elizabeth II awarded Ms. Suzan Sabancı Dinçer the title of "Commander of the Most Excellent Order of the British Empire (CBE)" in recognition of her contributions to the development of Turkey-UK relations. Suzan Sabancı Dinçer is strongly committed to social responsibility activities and assumes various positions in the fields of culture, education, the promotion of entrepreneurship and environmental protection: she is a member of the Board of Trustees of Sabancı University, as well as a founding member and board member of Endeavor Turkey and of the Advisory Board of Akbank Sanat. Under her stewardship, Akbank became the first deposit bank in Turkey to issue a GRI (Global Reporting Initiative) rated Sustainability Report. Suzan Sabancı Dinçer holds a BA in Finance from Richmond College in the UK and an MBA from Boston University in the USA. Ms. Sabancı Dinçer is married with two children.



Ms Felicity Gerry, QC

International Barrister

Felicity is an international barrister specialising in sex, death and fraud trials with more than 19 years' experience of complex criminal cases. She has appeared as leading counsel in cases involving cross jurisdictional issues including murder, baby shaking, international conspiracy to facilitate illegal immigration, historic sexual abuse, sleep rape and multiple rapes across several jurisdictions. Commercially she advises on criminal restraint and other international fraud, money laundering issues, defamation and personal injury arising in claims for alleged sexual abuse.



"Forget China, India and the internet: economic growth is driven by women. Women complain (rightly) of centuries of exploitation. Yet, to an economist, women are not exploited enough: they are the world's most under-utilised resource..."

The Economist, 15 April 2006

SPEAKERS

Professor Margaret Harding

Deputy Vice Chancellor, Australian National University

Professor Margaret Harding was appointed Deputy Vice-Chancellor (Research) at the Australian National University in June 2012. She is a Director on the Boards of ANU Enterprise, Australian Scientific Instruments, National Computational Infrastructure and an alternate Director on the Board of ANU Connect Ventures. Professor Harding held the positions of Pro Vice-Chancellor (Research) at the University of New South Wales (UNSW) from 2008–2012, and inaugural Dean of Graduate Research at UNSW from 2005–2009. She has been a director on the Boards of the UNSW Foundation, Neuroscience Research Australia, an alternate Director on the Board of Bionic Vision Australia. Professor Harding holds PhD (1987) and DSc (2002) degrees from the University of Sydney. She held postdoctoral positions at the Université Louis Pasteur in Strasbourg, France and the University of Cambridge, before returning to Australia and an academic position at the University of Sydney. Professor Harding's current research interests are in biological and medicinal chemistry with a particular focus on antifreeze proteins and molecular recognition of DNA.



Dr Susan Harris Rimmer

Director of Studies, Asia Pacific College of Diplomacy, College of Asia and the Pacific, Australian National University

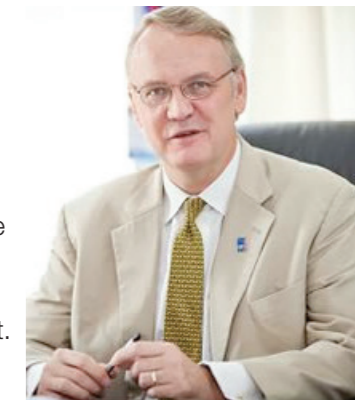
Dr Susan Harris Rimmer is the Director of Studies at the Asia-Pacific College of Diplomacy. She has been awarded the Audre Rapoport Prize for Scholarship on the Human Rights of Women, has been a board member of UN Women National Committee Australia and is currently on the national board of the Refugee Council of Australia. Dr Harris Rimmer is the G20 correspondent for *The Conversation* and is a keynote speaker and frequent contributor to the press. She has been awarded an ARC Future Fellowship and was a non-government delegate to the 58th session of the Commission on the Status of Women, New York, March 2014.



Mr John Hendra

Assistant Secretary-General Deputy Executive Director for Policy and Programme, UN Women

John Hendra is Deputy Executive Director for Policy and Programme at UN Women, the UN organization dedicated to gender equality and the empowerment of women, where he leads the agency's global policy work and its programmes in over 70 countries and manages the Bureau supporting policy analysis, research and programme management. He co-chairs the UN Development Group's Millennium Development Goal (MDG) Taskforce and is a member of the Senior Coordination Group of four ASGs tasked by the UN Secretary-General to coordinate UN System support to Member States to formulate the post-2015 development agenda. His 28 year career in the UN spans roles in four different regions including 13 years as UN Resident Coordinator in Latvia (1993–1997), Tanzania (2002–2006) and Vietnam (2006–2011), where he led a very successful UN reform effort at country level—the 'Delivering as One' Initiative.



SPEAKERS

Ms HK Holdaway

General Manager, G20 Policy Division, Treasury

HK is Australia's G20 Deputy's Deputy and the General Manager of the G20 Policy Division. As Australia manages the G20 Presidency in 2014, the G20 Policy Division supports the Treasurer to shape, manage and lead the policy agenda and engagement in relation to the G20 Finance Ministers and Central Bank Governors meetings. In 2010, HK was seconded to the Korean Government to assist with their G20 Presidency responsibilities and was rewarded a Public Service Medal and a Korean President's Medal for her work.



Dr Fiona Jenkins

Convenor of the ANU Gender Institute

Dr Fiona Jenkins became the Convenor of the ANU Gender Institute in 2013. She is based in the School of Philosophy, Research School of Social Sciences in the ANU College of Arts & Social Sciences and holds an Oxford D.Phil. Her own work on gender includes research in feminist and queer theory, on problems of violence, and on the status and contribution of women in academic disciplines. She is an expert on the social and political philosophy of leading gender theorist, Judith Butler.



Ms Ged Kearney

President, Australian Council of Trade Unions

Gerardine (Ged) Kearney commenced as ACTU President on 1 July 2010, and is the third woman to hold the position. Prior to this Ged was the Federal Secretary of the Australian Nursing Federation from April 2008 and had been an elected official with the ANF since 1997. Ged believes that unions should not just be concerned with the experience of people at work but they should be advocates for change to improve all aspects of Australians lives. Ged's ambition as ACTU President is to build respect from political leaders and the broad community for the values of fairness and the role played by unions in delivering social change.



Professor Eun Mee Kim

Director, Institute for International Development and Human Security (IDHS); Professor, Graduate School of International Studies, Ewha Womans University, Seoul, South Korea

Dr. Eun Mee Kim is the Director of the Institute for International Development and Human Security (IDHS) and a professor at the Graduate School of International Studies at Ewha Womans University in Seoul, South Korea. Dr. Kim is the former Dean of the Graduate School of International Studies and International Education Institute at Ewha Womans University; and a civilian member of the Regulatory Reform Committee and the Committee for International Development Cooperation. Dr. Kim holds a B.A. from Ewha Womans University and an A.M. and a Ph.D. in Sociology from Brown University. She has taught at the University of Southern California and served as a Visiting Scholar at Harvard University and Brown University.



SPEAKERS

Dr Jeni Klugman

World Bank and Kennedy School, Harvard University

Jeni Klugman is a Senior Adviser at the World Bank, and a Fellow at the Harvard Kennedy School's Women and Public Policy Program. She also serves on several advisory boards, including that of the World Economic Forum's on Sustainability and Competitiveness, and those related to the work of the Council on Foreign Relations, Plan International, International Civil Society Network, and the Global Forum on Women in Parliaments, as well as a European Union research program on GDP and beyond. Her previous roles include Director of Gender and Development at the World Bank Group, where she served as lead spokesperson on gender equality issues, and was responsible for developing strategic directions to promote the institution's gender agenda. She holds a Ph.D. in Economics from the Australian National University, as well as postgraduate degrees in both Law and Development Economics from Oxford University, where she was a Rhodes Scholar.



HE Dr Shaikha Al Maskari

Al Maskari Holdings, UAE

Dr Shaikha Al Maskari is the Chair of Al Maskari Holding, an umbrella organization for business interests in oil, gas renewable energy, mining, contracting, facilities management, health care, food services, security, and media. She is also Chair of the Tricon Group, Johnson Controls and Global Communications, and Singapore Expo (SGME). Her recent awards, include: Best Woman Entrepreneur of 2012 from the Middle East and North African American Chamber of Commerce; the 2012 International Alliance of Women Award for "outstanding contribution in making all the difference in the world to the economic empowerment of women"; in 2014 Petroleum Institute and Kuwait University award for contribution to women in offshore engineering; the UAE Red Crescent and the Qatar Red Crescent award for contribution to international emergency relief. Dr Al Maskari established the Global Institute of Justice & Technology and Global Paramedic & Rescue Academy, training hundreds of personnel in police sciences, security, emergency and public safety services. She is the founder of the United Mercy Foundation, which sponsors orphans and emergency aid. She co-founded the Diyarbakir Micro-credit Project which has successfully launched close to 70,000 entrepreneurs across Turkey, creating over 400,000 jobs. She established Global Environmental Responsibility Alliance to promote cross-border resource collaboration, and the Global Social Empowerment Alliance to promote good global citizenship. Dr Al Maskari is a board Member of the Arab International Women's Forum, the High Advisory Board of International Cooperation Platform, Women for Sustainable Growth, Abu Dhabi Music & Arts Foundation and MOSAICA Schools.



Australian G20 Sherpa Dr Heather Smith and Alison Hunt, Local Senior Elder representing Land

Photo courtesy of the Commonwealth of Australia

SPEAKERS

Dr Heather MacKenzie

President-Chief Executive Officer, FIM - Forum for Democratic Global Governance

Heather MacKenzie, PhD, joined FIM in 2002, and has been Programme Director since 2009. In June 2012, she was appointed by the FIM Board of Directors as FIM's Acting CEO and invited to become CEO in March 2013. Previously, Heather served as FIM's Research Coordinator and was a Professional Associate in Faculty Development at the Centre for University Teaching and Learning (McGill University) and Assistant Director of the Centre for Teaching and Learning Services (Concordia University), both in Canada. Heather has developed, prepared and managed numerous civil society democracy development projects and training programs for international civil society in Canada, Bangladesh, Egypt, India, Pakistan, Senegal, Sweden and Qatar. Her most recent publications include "Principles for Civil Society Engagement with Multilateralism" (*Global Civil Society: Shifting Powers in a Shifting World*) (2012) and *Democratizing Global Governance: Ten years of case studies and reflections by civil society activists* (2009). Heather brings a wealth of practical experience as a leader and manager in civil society engagement with multilateral institutions and other forums, including the United Nations, G20 and the Organisation of Islamic Cooperation.



Ms Julie McKay

Executive Director, UN Women Australia

Having held the position of Executive Director at the Australian National Committee for UN Women since March 2007, Julie advocates on key issues affecting women including women's leadership, pay equity, political participation and violence against women. With experience in both the corporate and NGO sectors Julie actively works to support strong partnerships between the community, the private sector and government. Julie sits on the Chief of Defence Force's Gender Equality Advisory Board, the Board of the YWCA of Canberra and has been involved in the committee which has been working to establish the Sydney University Business Alumni Network.



Mr Nicholas Pinaud

Organisation for Economic Cooperation and Development

Nicolas Pinaud is an adviser to the Secretary General of the OECD and Deputy-Head of the OECD Sherpa Office. He joined the OECD in June 2002. He worked previously as an emerging markets economist within the Risk Division of Société Générale Group (Paris) in charge of the Central and Eastern European Countries and as an economist for the French Trade Commission in Johannesburg. He was seconded from the OECD to be an advisor in the private office of the French Minister for Employment between 2007 and 2010. He graduated from the Ecole Normale Supérieure d'Ulm (Paris) and holds Masters degrees in Development Economics, Political Science and History from the University of Paris-1-Sorbonne.

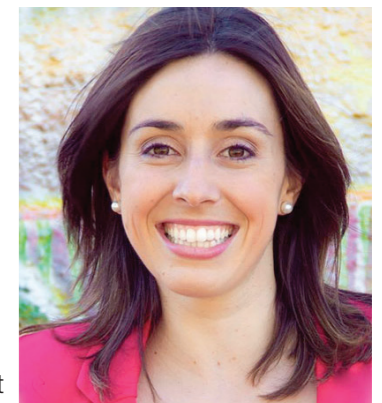


SPEAKERS

Ms Holly Ransom

Chief Executive Officer, HRE Global

Named as one of 2012's '100 Most Influential Australian Women' by the AFR, Holly's passion for driving sustainable change in both the corporate and NFP world is truly remarkable. In 2012 Holly became the world's youngest Rotary president, and was named both Young Western Australian of the Year and Young Volunteer of the Year. A keynote speaker at the 100th anniversary of International Women's Day in 2011, Holly has represented Australia at summits across the globe, drafted and presented a Peace Charter to the Dalai Lama and trade policy recommendations to the WTO. Holly has been appointed by the Australian Prime Minister to Chair of the 2014 G20 Youth Summit in Australia.



Dr Rangita de Silva de Alwis

Director, Global Women's Leadership Initiative, The Woodrow Wilson International Center for Scholars

Dr Rangita de Silva de Alwis directs the Global Women's Leadership Initiative and the Women in Public Service Project launched by Secretary Hillary Clinton and the Seven Sisters Colleges at the Woodrow Wilson International Center for Scholars. Rangita is a women's human rights scholar and practitioner with over 25 years of experience working globally in over 25 countries with a vast network of academic institutions, government, and nongovernment entities on women's human rights law and policy making and institutional reform. She has convened several transnational networks including the Women's Leadership Network in Muslim Communities, the Asia Cause Lawyer Network in India, and the Gender and Law Expert Group and the Women's Watch in China. She has worked over 14 years with Chinese gender and law experts and academics and has testified twice before the Congressional Executive Commission on China on the status of women's rights in China.



Dr Heather Smith

Deputy Secretary, G20 Sherpa, Department of the Prime Minister and Cabinet

Dr Heather Smith was appointed Deputy Secretary, G20 Sherpa in the Department of the Prime Minister and Cabinet in September 2013. Prior to this time, Dr Smith had responsibility in the department for economic, industry, infrastructure, environment and strategic policy matters in her role as Deputy Secretary, Economic and Strategy when she joined in May 2013. In August 2010, Dr Smith was appointed Deputy Secretary in the Department of Foreign Affairs and Trade with responsibility for the Americas and Africa, North Asia, international security issues, G20 and the international economy, and information technology issues. In February 2005, Dr Smith was appointed Deputy Director-General, Office of National Assessments with responsibility, at various times, for North Asia, South Asia, the Pacific, transnational issues, international economic issues, corporate issues, and Executive and foreign intelligence coordination. Between 2003-2005, Dr Smith held positions at the Australian Treasury as General Manager, G20 and APEC Secretariat and General Manager, International Economy Division. From 2000-2003, she was Assistant Director-General, International Economy Branch, Office of National Assessments.



SPEAKERS

Dr Paola Subacchi

Research Director, International Economics, Chatham House

Paola Subacchi is the Director of International Economics Research at Chatham House (The Royal College of International Affairs) in London. She is an expert on the functioning and governance of the international financial and monetary systems, and has written extensively in peer-reviewed journals and current affairs publications. She advises governments, international organisations, non-profits, and corporations. Dr Subacchi speaks at conferences and high-profile events around the world and is a regular media commentator with the BBC, CCTV, Project Syndicate, the Financial Times and the Huffington Post Italy. She is a board member of Scottish Mortgage Investment Trust Plc, a governor of St Marylebone School in London and an advisory member of Wilton Park. An Italian national, she studied at Università Bocconi in Milan and at the University of Oxford.



Dr Helen Szoke

Chief Executive Officer, Oxfam Australia

Helen Szoke commenced as Chief Executive of Oxfam Australia in January 2013. Prior to this appointment, Helen served as Australia's Federal Race Discrimination Commissioner, following seven years as the Victorian Equal Opportunity and Human Rights Commissioner. She is currently Co-Chair of Make Poverty History, an ExCom member of ACFID, a member of the Deakin University Master of International and Community Development Advisory Board. She also sits on the Executive Board of Oxfam International. In 2011, Helen was awarded the Law Institute of Victoria Paul Baker Award for contribution to Human Rights. In 2014 she received the University of Melbourne Alumni Award for Leadership. Helen has extensive experience in management, community development, organisational development, consumer advocacy and regulation in the education and health sectors.



Professor Veronica Taylor

Dean, College of Asia and the Pacific, Australian National University

Veronica Taylor was appointed Dean of the ANU College of Asia and the Pacific in July 2014 and also directs the Research School of Asia and the Pacific. She was previously Director of the Regulatory Institutions Network (RegNet) (2010–2014) and Director of the (former) School of Regulation, Justice and Diplomacy. Prior to joining the ANU she was Director of the Asian Law Center at the University of Washington, Seattle (2001–10) and remains a Senior Advisor to that Centre. In 2010 she was the inaugural Hague Visiting Professor in Rule of Law—a chair funded by the City of the Hague and hosted by the Hague Institute for the Internationalization of Law (HiIL) and Leiden University's Van Vollenhoven Institute. Professor Taylor has over 25 years' experience designing and leading rule of law and governance projects for the U.S. Department of State, the U.S. Agency for International Development, the World Bank, the Asian Development Bank and AUSAID. Her projects have focused on Afghanistan, Armenia, Australia, Azerbaijan, Bulgaria, China, Egypt, Indonesia, Japan, Mongolia, the Philippines, Vietnam and the United States.



SPEAKERS

Ms Carol Yost

The Asia Foundation

Carol Yost has been with The Asia Foundation since 1986. In 1993 she designed and launched a dedicated program to increase women's participation in public decision-making and political processes. As director of the Women's Empowerment Program, she oversees all of the Foundation's programs to advance women across the Asia-Pacific region in conjunction with the Foundation's country field offices and local partner organizations. Based in Washington, DC, Yost travels to Asia regularly to collaborate with the Foundation's expert staff to develop programs that further women's political participation, legal rights, education, and economic opportunity and to support efforts that combat violence against women and trafficking of women and children. Regional and cross-border initiatives complement in-country activities to accelerate transfer of lessons learned and to build support networks. Carol Yost works closely with women leaders and women's organizations throughout Asia to build networks and create sustainable resources for women. She is an experienced speaker on the challenges facing women and strategies and programs that address women's priority issues. For over a decade, Yost has been directly involved with all of the Foundation's programs to expand opportunities for Asian girls and women including educating poor rural girls in Nepal, Bangladesh, Pakistan, and Cambodia; health and legal rights education for Chinese migrant women workers in the Pearl River Delta manufacturing zone; and micro-credit and vocational training in Pakistan, Cambodia, and Vietnam.



Dr Li Yuanfang

Research Fellow, Institute of World Economics and Politics, Chinese Academy of Social Sciences

Dr. LI Yuanfang is Research Fellow of the Institute of World Economics and Politics at Chinese Academy of Social Sciences. She is also a consultant for the International Department, Ministry of Finance of China, on international economics issues. She received her Ph.D in Economics from Peking University in 2010. Her research interests cover commodity prices, China's exchange rate policy, renminbi internationalization and G20 macroeconomic policy coordination. Her essays are published in peer-reviewed journals including *Financial Research* (in Chinese), *International Politics Research* (in Chinese), *International Economic Review* (in Chinese) and the *China Economic Journal*. She also writes for top financial media in China including *Caijing Magazine* and *FT Chinese*.



Turkish Sherpa Her Excellency
Ayse Sinirlioglu

GOVERNMENT DELEGATES

Ms Rebecca Bryant

Assistant Secretary, Economic Engagement Branch, Department of Foreign Affairs and Trade

Ms Caitlin Wilson

Assistant Secretary, G20 Development Branch, Department of Foreign Affairs and Trade

Ms Sally Moyle

Principal Sector Specialist (Gender), Department of Foreign Affairs and Trade

Ms Melanie Calvert

Assistant Director, G20 International Engagement Section, Department of Foreign Affairs and Trade

Ms Rosemary Cassidy

Human Rights and Gender Equality Branch, Multilateral Policy Division, Department of Foreign Affairs and Trade

Ms Laura Giltrap

Adviser, Women's Economic Security, The Office for Women, Department of the Prime Minister and Cabinet

Ms Christina Jancheck

G20 Taskforce, Department of the Prime Minister and Cabinet

Ms Kirri Piper

Adviser, Women's Economic Security, The Office for Women, Department of the Prime Minister and Cabinet

Mr Greg Ralph

Director, G20 International Engagement Section, Department of Foreign Affairs and Trade

DELEGATES

Ms Sarah Boyd

The Gender Agency, Athena Consortium

Ms Yen Eriksen

Communications and Project Coordinator, YWCA Australia

Mr Brian Gleeson

Sustineo

Ms Melissa Grah-McIntosh

Director, Women in Leadership Initiative, US Studies Centre, University of Sydney

Ms Lucia Hanmer

Lead Economist, World Bank Group, Gender and Development

Ms Virginia Hausegger AM

ABC News, Canberra

Mr Reece Kinnane

Political Engagement Coordinator and G20 Lead, Oxfam Australia

Dr Caroline Lambert

CEO YWCA

Ms Vanessa Lao

Griffith University

Ms Joanna Lindner Pradela,

Head of Policy, Aid & Development Effectiveness (ACFID)

Dr Imogen Reid

Senior Adviser Trade and International Affairs Women's Empowerment Principles, Australian Chamber of Commerce and Industry

Ms Hale Yildiz

Australian Institute of International Affairs

Ms Jacqueline Zwambila

Former Zimbabwe Ambassador to Australia

G20 Labour and Employment Ministerial meeting, Social Dialogue, Melbourne September 2014

French President of the Council on Employment, Marie-Claire Carere-Gee, with Youth 20 co-chair Holly Ransom

Photo courtesy of the Commonwealth of Australia



AUSTRALIAN NATIONAL UNIVERSITY REPRESENTATIVES

Ms Jessica Avalon
Director, ANU Circle for Gender Equity

Ms Linda Ma
Girls 20

Professor Miranda Stewart
Director, Australian Tax and Transfer Policy Institute, Crawford School of Public Policy

Ms Anahita Surya
Secretary, ANU Circle for Gender Equity

Dr Katerina Teaiwa
Head of Department of Gender, Media and Cultural Studies, School of Culture, History & Language

Ms Sophie Yates
Treasurer, ANU Circle for Gender Equity

RAPPORTEURS

Dr Joanne Crawford
Rapporteur, International Women's Development Agency

Mr Giridharan Ramasubramanian
Rapporteur, College of Asia and the Pacific

Photo: G20 Joint Sherpa and Finance Deputies Meeting, Melbourne 2014
Photo courtesy of the Commonwealth of Australia



DIPLOMATIC REPRESENTATIVES

Embassy of Brazil
Ms Camila Giunchetti, First Secretary

British High Commission
Ms Alison Hall, First Secretary, Economic Affairs

Canadian High Commission
Mr Charles E Reeves, Deputy High Commissioner
Ms Priya Sinha, First Secretary

Embassy of France
Ms Marine Lainé, Deputy Head of Mission

Embassy of Italy
Professor Grazia Micciche, FHEA, Culture Attache

Mexican Embassy
Ms Maria Luisa Gonzalez Manjarrez, Minister

New Zealand High Commission
Ms Tessa Versteeg, Second Secretary

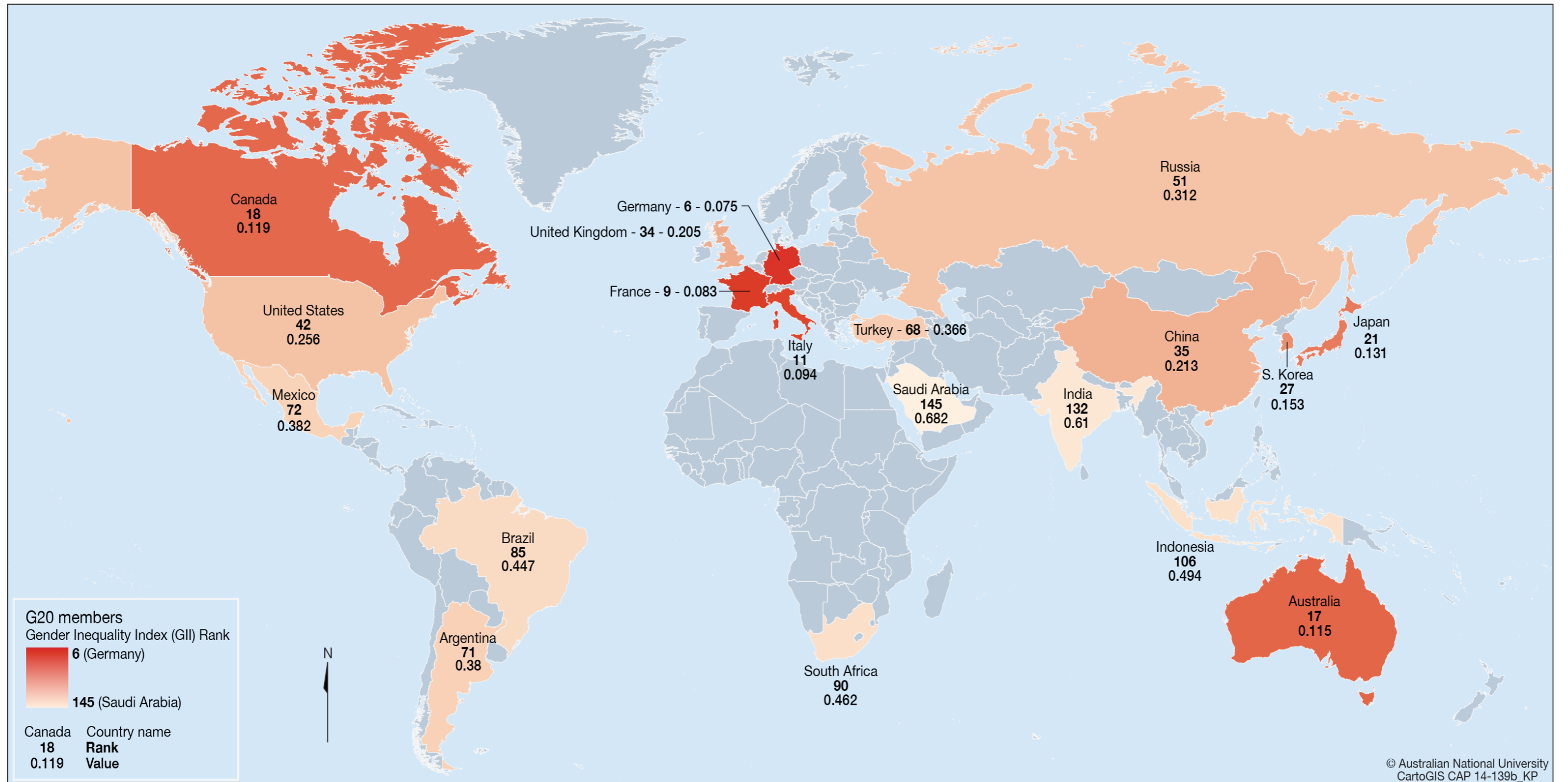
South African High Commission
High Commissioner HE Ms Koleka Mqukwana
Mr Ray Sithole, Counsellor

Turkish Embassy
Ms Gülseren Çelik, First Counselor

US Embassy
Mr Peter Thorin, First Secretary
Mr Jacob Hall

MAP OF G20 COUNTRIES RANKED INEQUALITY

ACCORDING TO GENDER



CONTACT US

**School of International,
Political & Strategic Studies
Hedley Bull Centre**

The Australian National University
Canberra ACT 0200
T +61 (0) 2 6125 2167
E ips@anu.edu.au
W ips.cap.anu.edu.au

Stay connected

Like us on our Facebook page

facebook.com/hedley.bull

Follow us on twitter

[@ANUHedleyBull](https://twitter.com/ANUHedleyBull)

CRICOS #00120C | 080514CASS

**International Economics, Chatham House
The Royal Institute of International Affairs**

London SW1Y 4LE
T +44 (0) 20 7314 2760
E internationaleconomics@chathamhouse.org
W www.chathamhouse.org

Stay connected

Like us on our Facebook page

Facebook.com/Chathamhouse

Follow us on twitter

[@CH_IntEconomics](https://twitter.com/CH_IntEconomics)

Join the conversation

Twitter: [@ANUHedleyBull](https://twitter.com/ANUHedleyBull) [@CH_IntEconomics](https://twitter.com/CH_IntEconomics) [#G20gendersummit2014](https://twitter.com/#G20gendersummit2014)