



Supported by
DFID

جائزة دبي الدولية
لأفضل الممارسات
DUBAI INTERNATIONAL AWARD
FOR BEST PRACTICES



**2011 Award
for Best
Practices to
Improve the
Living
Environment**

Luanda Urban Poverty Programme



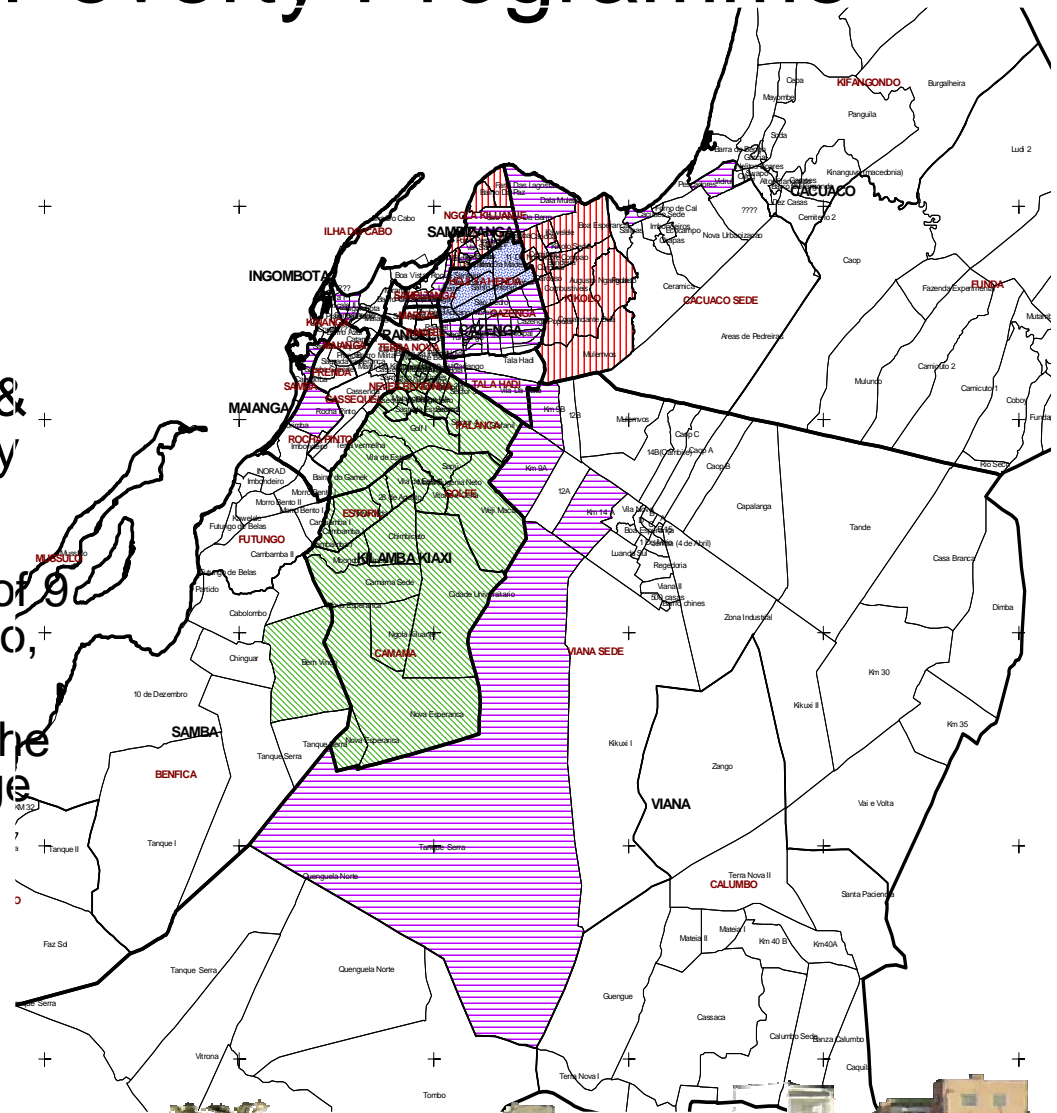
**DRIVERS OF CHANGE
AWARD**

**Southern
AfricaTrust**
Influencing Policies to End Poverty

Luanda Urban Poverty Programme

LUPP is a programme implemented, since 1999, by a consortium partnership of NGOs: Development Workshop, CARE International, One World Action & Save the Children (UK) funded by DFID

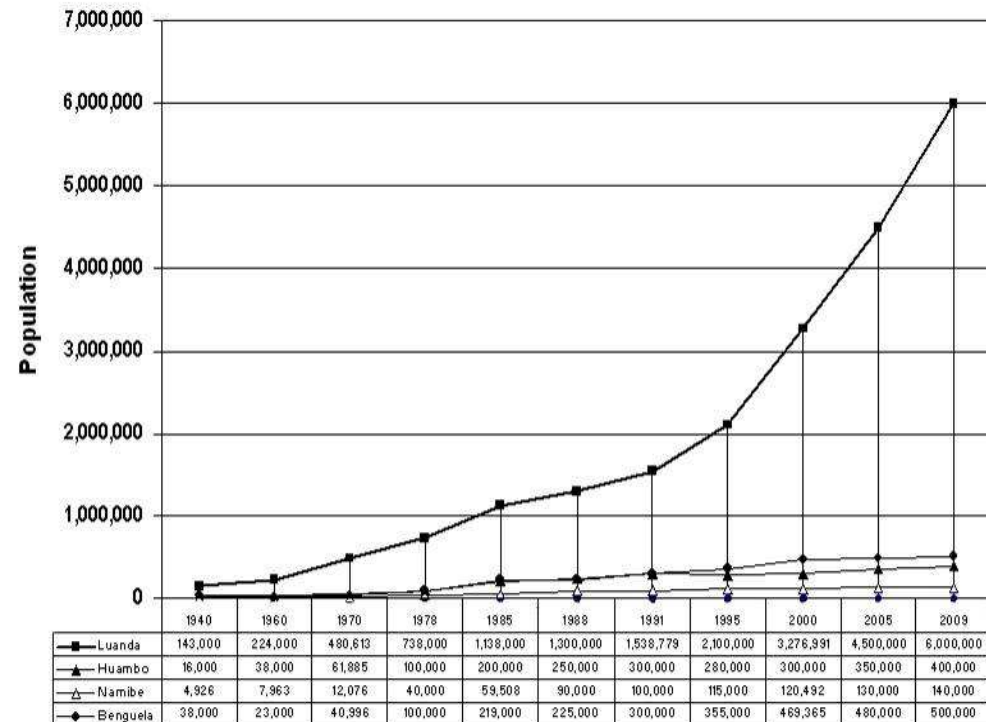
- LUPP works in 4 municipalities of 9 in Luanda, Sambizanga, Cacuaco, Cazenga, Kilamba Kiaxi
- The project builds lessons from the experience of working with a large number of Luanda's poorest communities, benefiting over 2,000,000 people.



Post Conflict Urban Challenges

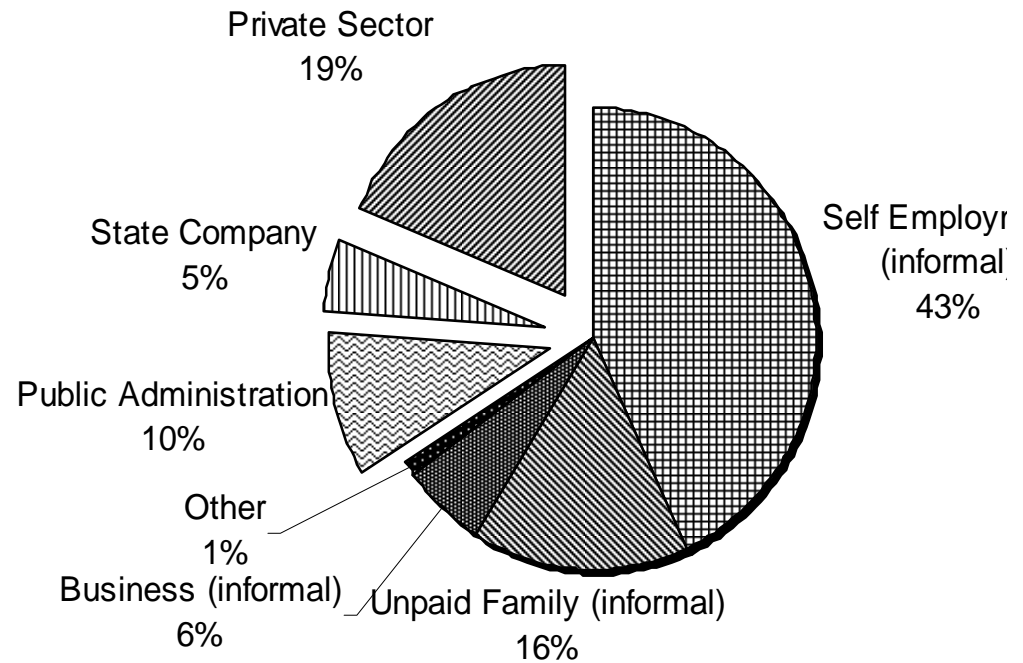
- Forced migration during the war, flight to the safe haven of the capital city.
- Massive destruction of social and physical infrastructure.
- Rapid urban growth, largely due to the war continues even after conflict ended.
- Population growth today fuelled by high birth rate and movements from centre to periphery
- 60% are under 18.

Urban Population growth in War & Peace



Urban Poverty & Gender

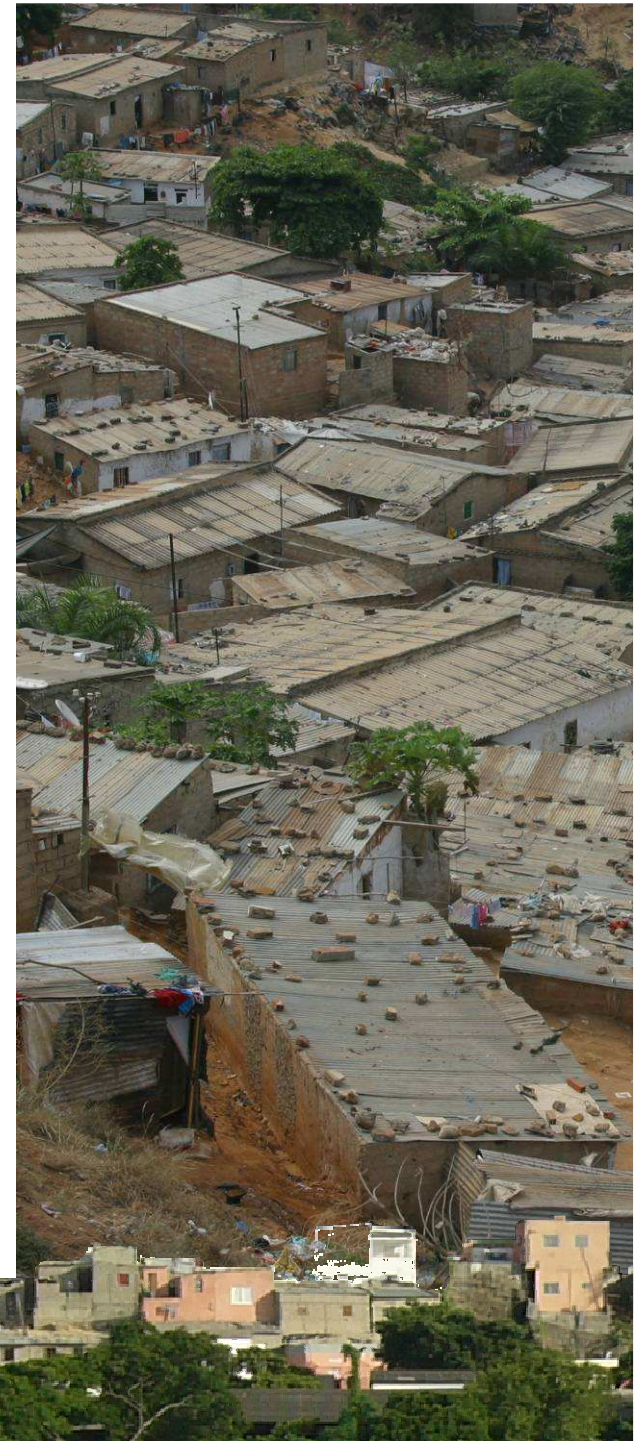
- Over 75% population of Luanda in “*musseques*”
(Kimbundu word for sandy soil)
- High unemployment & underemployment
- The poor survive by trading in the informal market sector.
- Over 60% population depend on the informal sector for employment
- 63.9% of working women were employed in the informal sector



Integrated Urban Poverty Reduction

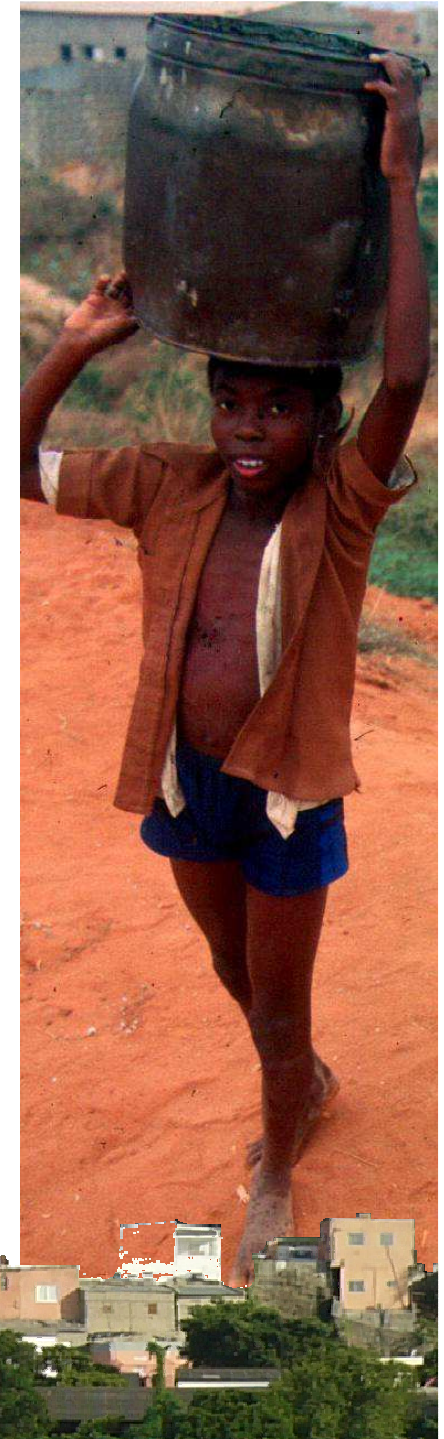
LUPP's Strategy

- To promote equitable, inclusive, pro-poor policies and practices for poverty reduction in Luanda
- Testing & demonstrating solutions to priority needs in basic service provision & livelihoods
- Strengthening capacity of local authorities & communities to promote local development
- To contribute to the Government's decentralisation and poverty reduction strategies by sharing LUPP's results and lessons learned.



Crisis of Basic Services

- Mass migration and poor maintenance has led to significant stress on infrastructure & collapse of delivery of basic services
- Fewer than 50% of households have on-site sanitation
- Only 30% of Luandans have access to running water
- 70% buy water from tankers – pay 15 to 20 times more
- Households can spend up to 25% income on water
- Urban poor subsist on less than 7 lts per day (15 lts per day is minimum emergency requirement and 60 lts considered an adequate supply).
- Diarrhoea and Malaria are primary causes of death, both due to poor sanitation.
- Cholera epidemic has stuck Luanda in 2006 registering over 19,000 cases so far.



Basic services

LUPP Best Practices



LUPP Strategies & Results

Water

- 65 Community managed standposts for over 74,000 people doubled individual access from 7 to 15 litres per day.
- Greater involvement of local administration and EPAL and consumers in community managed standposts promoting sustainability through cost recovery for ongoing maintenance.
- Low indications of cholera where LUPP is working.

Sanitation

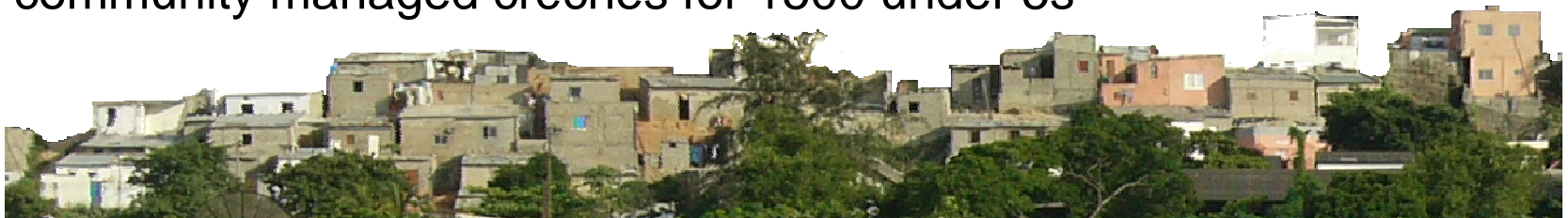
- Subsidy on 3,500 family latrines with community in-kind contribution in terms of labour (sweat equity)
- Public Hygiene through 40 market and school latrines for 30,000

Solid waste

- Municipal-based solid removal services to market and house-to-house cost recovered
- Partnership with ELISAL to test transfer station model.

Crèches

- Partnership between MINARS, NGOs and community have provided 25 community managed crèches for 1500 under 5s



Livelihoods for the Urban Poor

- Women and children in poor households depend on informal market commerce to sustain their families.
- LUPP's livelihood strategy promotes development of business skills and access to credit and savings to build micro enterprises and create employment.



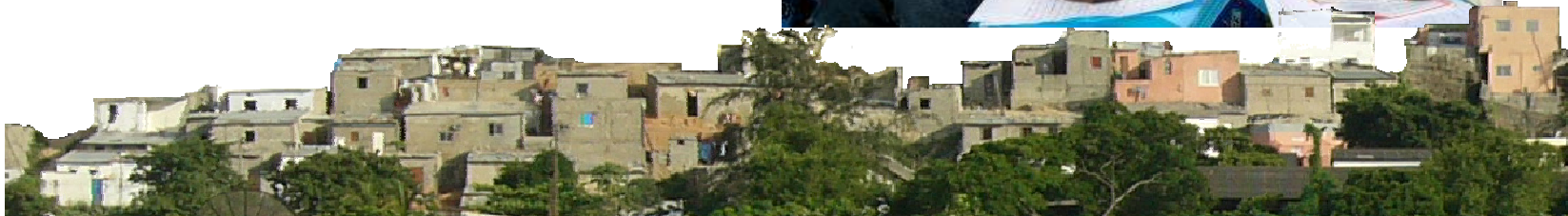
Micro-credit and Savings

Micro-Credit

- More than 15,000 clients, 62% of them women, currently are receiving loans through a network of over 1200 solidarity groups and 7 branches serving poor neighbourhoods of Luanda and 8 other provinces. Loaning over \$25 million last year (2010).
- Angola's first non-bank Micro-Finance Institution KixiCredito has been launched to serve poor clients who do not have access to commercial banks.

Savings

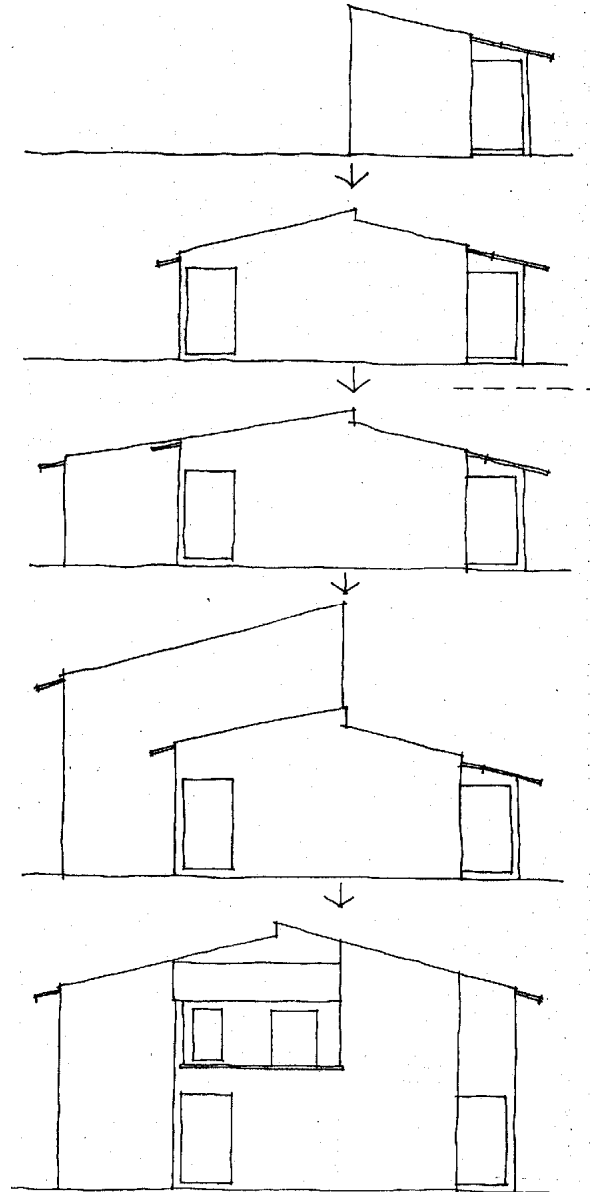
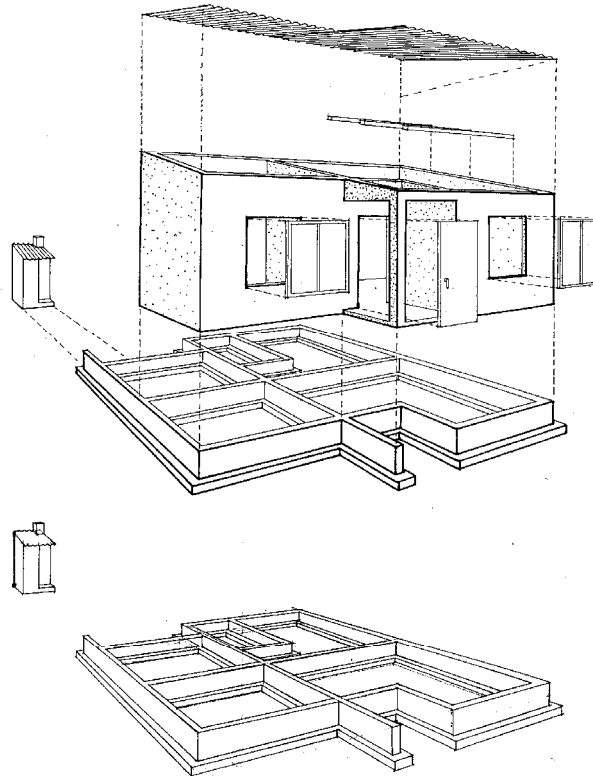
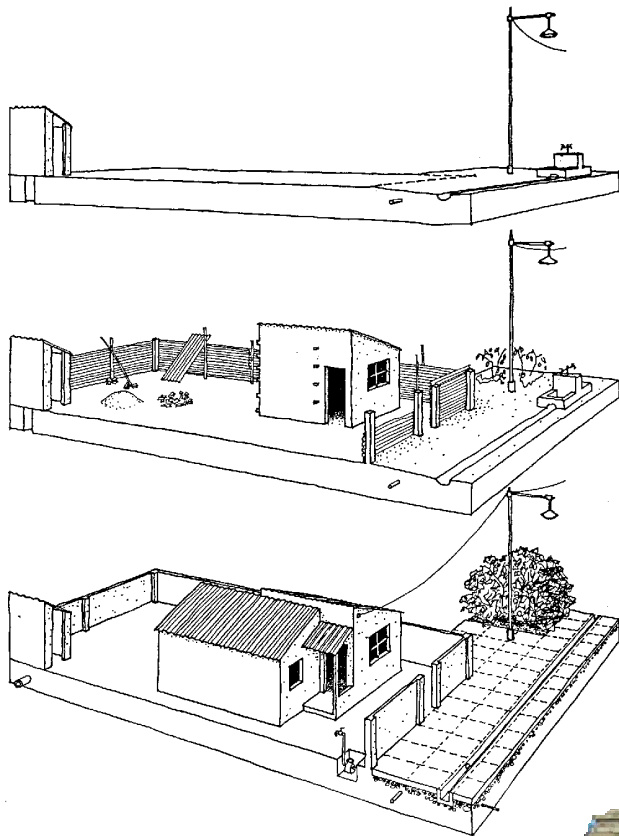
- 119 Savings Groups have been established to promote families to accumulate their own capital.





KixiCasa

Credit is be offered to clients for improving their houses or building phased up-gradable houses over several loan cycles.



DW



Building Civil Society



Reinforcing Social Capital

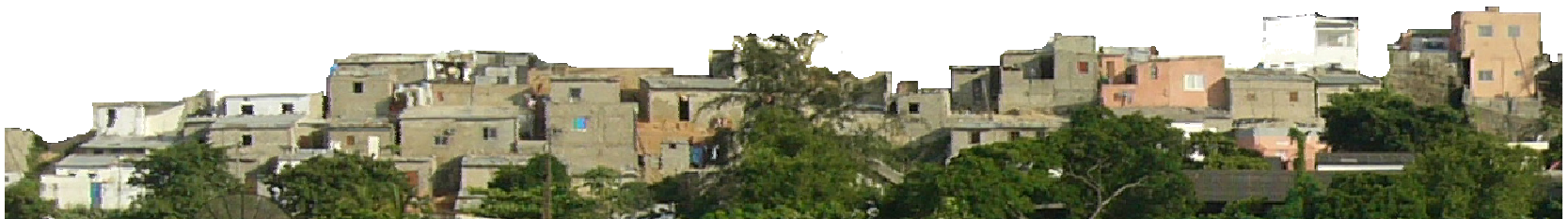
Increased opportunities of urban residents to work together through local organisations to address common problems.

Building Local Anti-Poverty Network

- Built institutional and technical capacity in over 60 local NGOs
- Creation of the Luanda Urban Anti-Poverty network to reinforce municipal and to have a voice in the National Civil Society Conference.

Community Based Organizations

- Facilitate formation of over 100 water and service based management groups
- Over 1200 livelihoods based groups formed
- Broad base of participation in Municipal Forums



Governance



Governance

- Supporting the Government's strategy for decentralisation and Municipal development.
- Reinforcing the capacity of local authorities to work in a participatory way with urban residents to meet basic service needs.
- Improve service delivery of Provincial and parastatal service companies to poor urban communities.
- Creation of spaces for public debate and consultation and promote the formation of new leaders in anticipation of future democratically elected Municipal Councils.



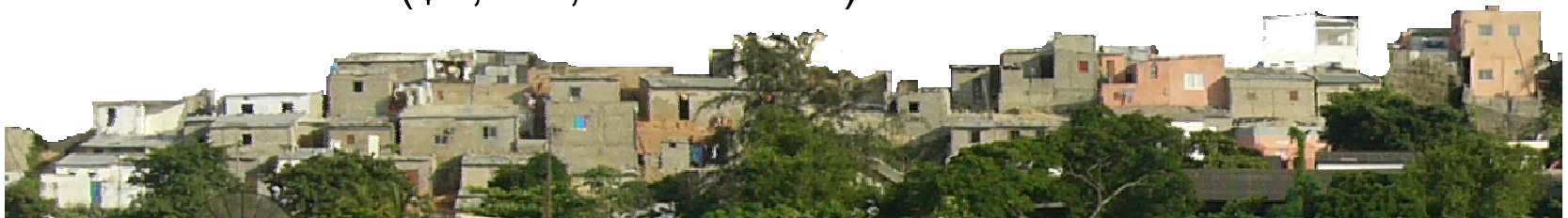
Municipal Forums

Municipal Development Forums

- Creation of Municipal Development Fund led by municipal administration and elected community representatives.
- LUPP's Development Forum sessions have been attended by municipal administrators from provinces around the country and widely replicated.

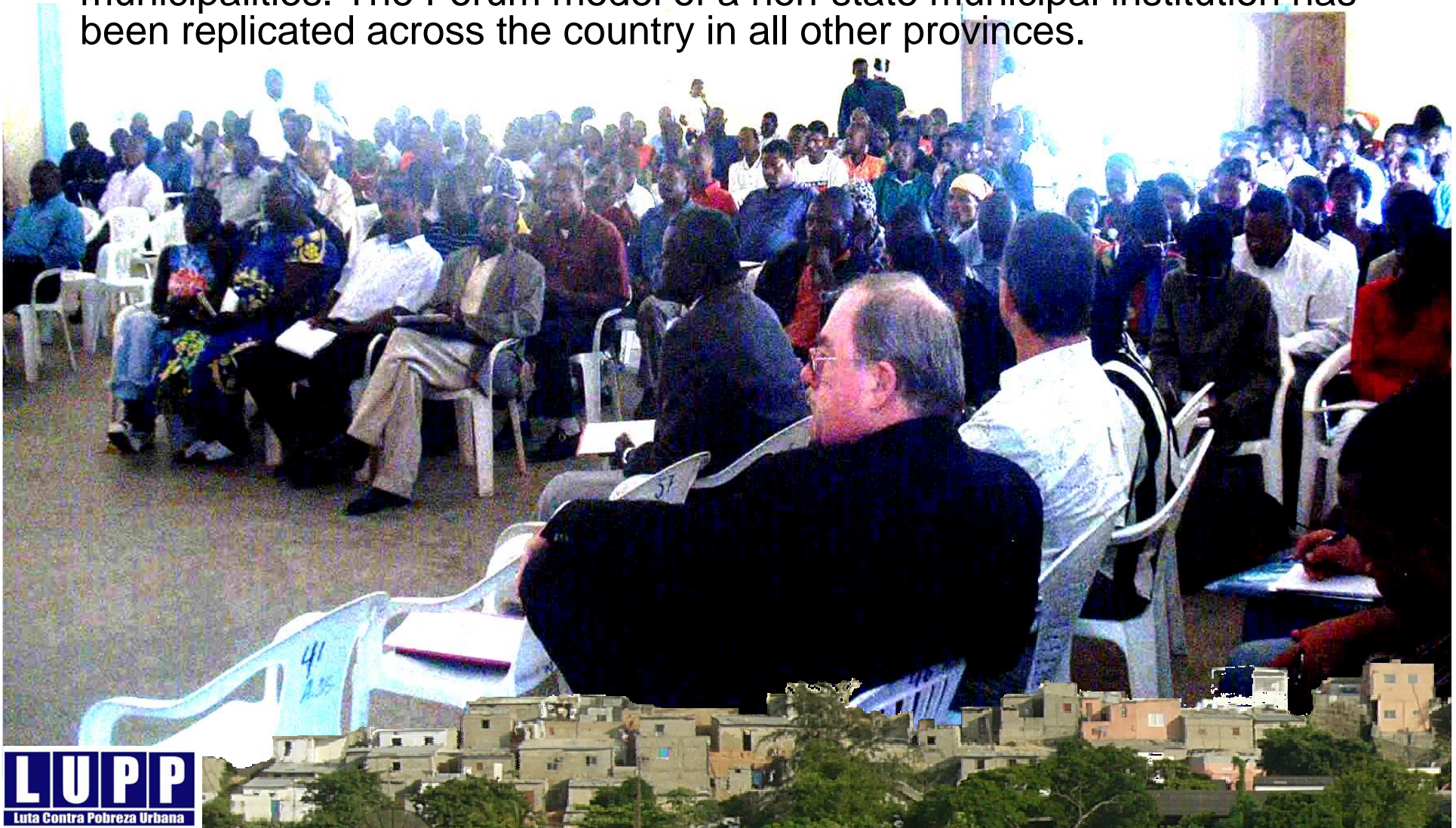
Integration with Municipal & Comuna Consultative Councils (formilised in legislation in January 2007)

- Hoji ya Henda – *comunal* level – meetings between service providers and civil society
- Issues have been resolved e.g. water
- Sambizanga municipal level – participative budgeting
- Established Information centres and information bulletin
- Principals of participatory budgeting have been adopted to develop plans for new funds (\$5,000,000 in 2008)



Municipal Development Forums

The first **Municipal Development Forum** was launched by LUPP in Kilamba Kiaxi on 14 Sept 2001, and are now regularly held in all four municipalities. The Forum model of a non-state municipal institution has been replicated across the country in all other provinces.



Participatory Planning

- Municipal development plans using consultative mechanisms of involving civil society and residents committees through forums and local councils in Kilamba Kiaxi, Sambizanga and Cacuaco.



LUPP Lessons on Urban Poverty

1. Lessons from LUPP which have been tested and validated are recorded in “**best practice models**” for replication.
2. LUPP promotes active **learning and understanding** on urban poverty issues and policies by key Government and community stakeholders.
3. LUPP strengthens the **capacity** of local authorities and civil society to ensure inclusive and participatory local development.
4. LUPP has demonstrated **spaces for consultation** between local authorities and civil society on urban issues and promotes municipal democratisation.

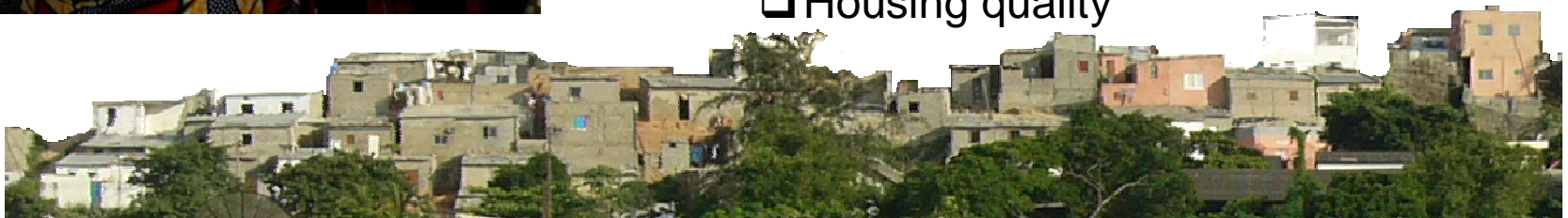


Using MDG Monitoring for Pro-Poor Advocacy

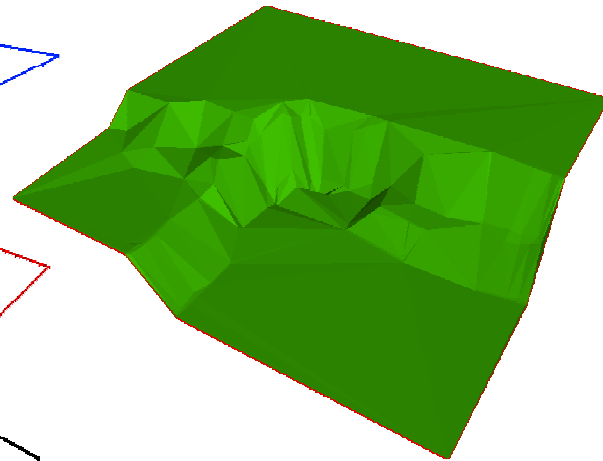
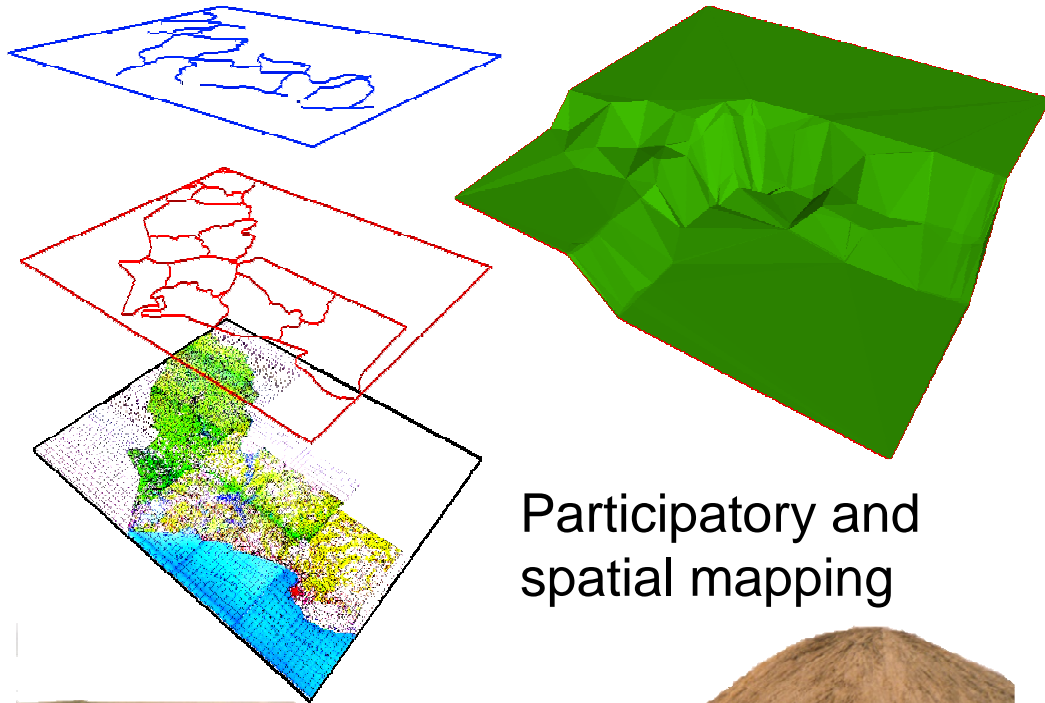


- Building Government policy partnerships through DW's Geographic Info unit and research networks
- Urban Observatory Poverty Monitoring for the Ministry of Urbanism and Environment (MINUA) using the MDG 11 indicators of:
 - Water
 - Sanitation
 - Overcrowding
 - Land tenure
 - Housing quality

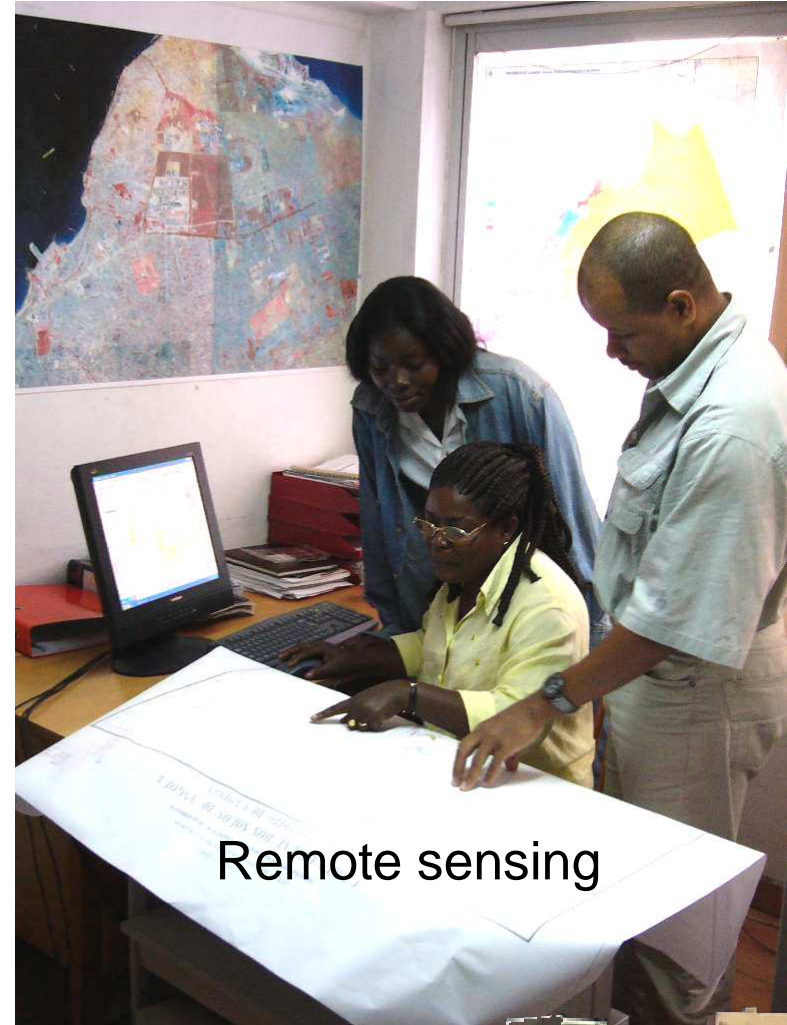
DW



Geographic Information Systems

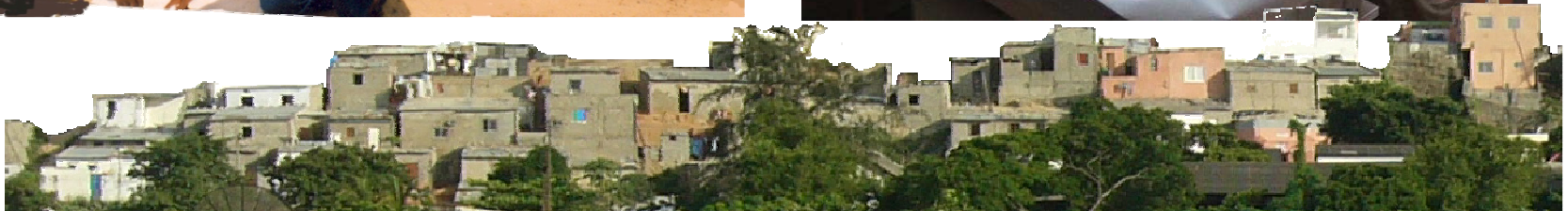


Participatory and spatial mapping



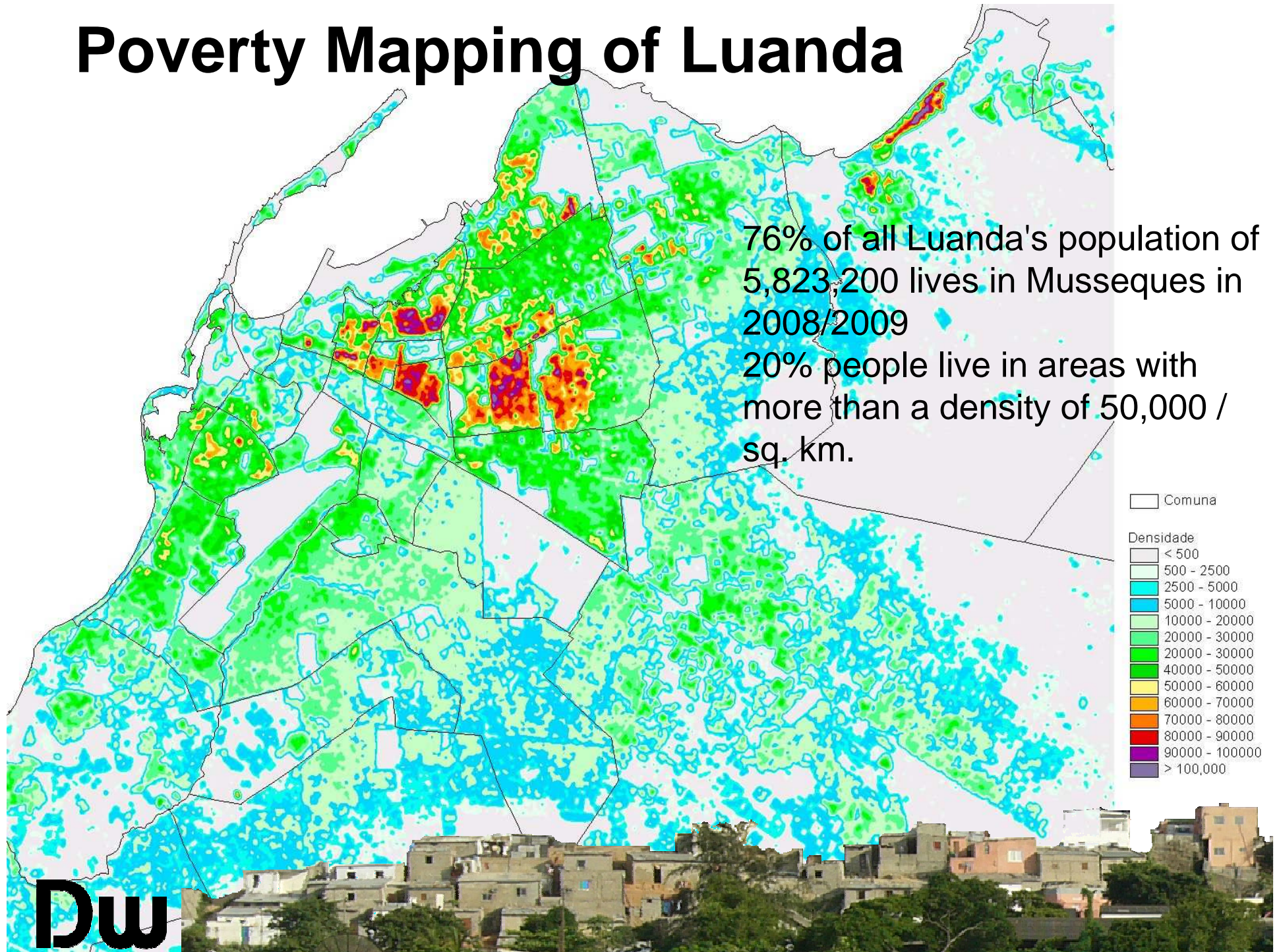
Remote sensing

DW



Poverty Mapping of Luanda

76% of all Luanda's population of 5,823,200 lives in Musseques in 2008/2009
20% people live in areas with more than a density of 50,000 / sq. km.



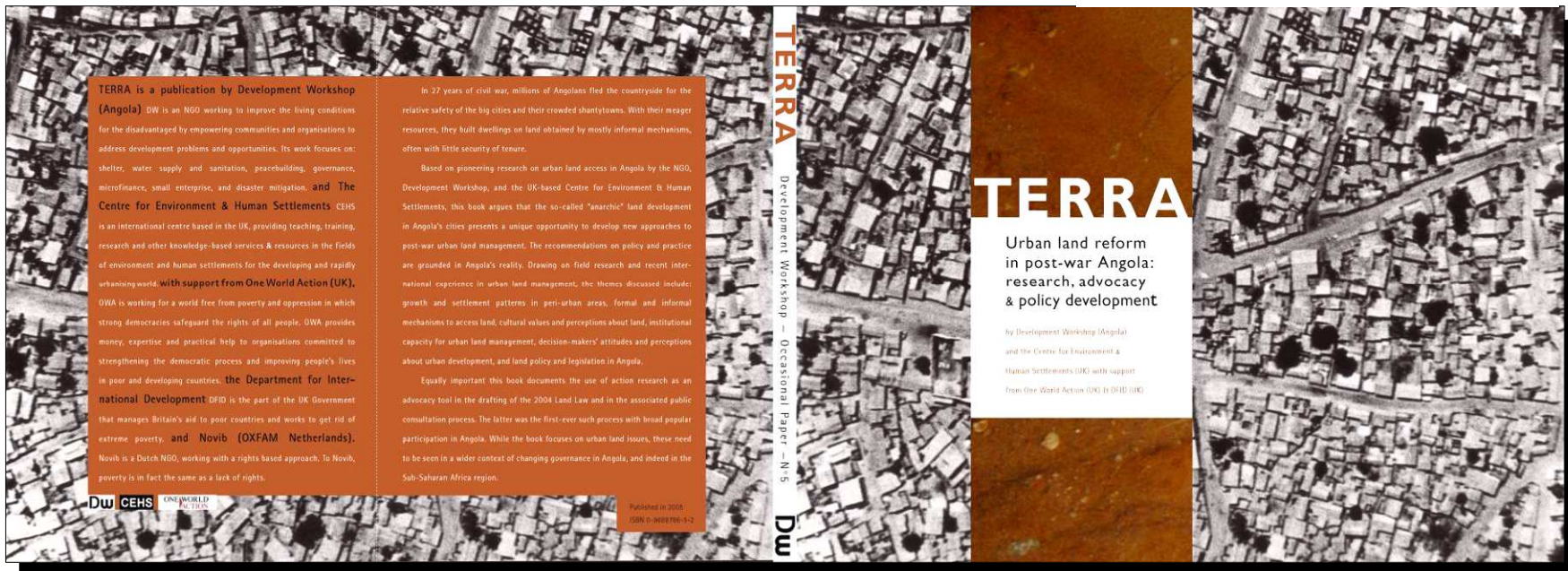
Findings

- The poor occupy much of the valuable inner-city land that is rapidly increasing in value.
- Most of poor families accumulated savings are tied up in the land they occupy and the house they built or purchase.
- More conflicts about land in peri-urban areas are to be expected in the future unless occupancy rights are secured
- Recognising the poor's tenure is a strategy for poverty reduction



Dissemination of Lessons

Publication of Results in book "TERRA"



DW



Demonstration Land Titling Projects



Feeding the Public Domain

CEDOC monthly Media Scan

Fevereiro 2007

Extractos da
imprensa Angolana
sobre questões sociais
e de desenvolvimento

CEDOC Dw

Centro de Documentação e Informação
Development Workshop
Luanda - Angola

Extractos da Imprensa

CEDOC Development Workshop - Angola

Centro de Documentação e Informação



CEDOC's Thematic CDs
Media compilation since 2001

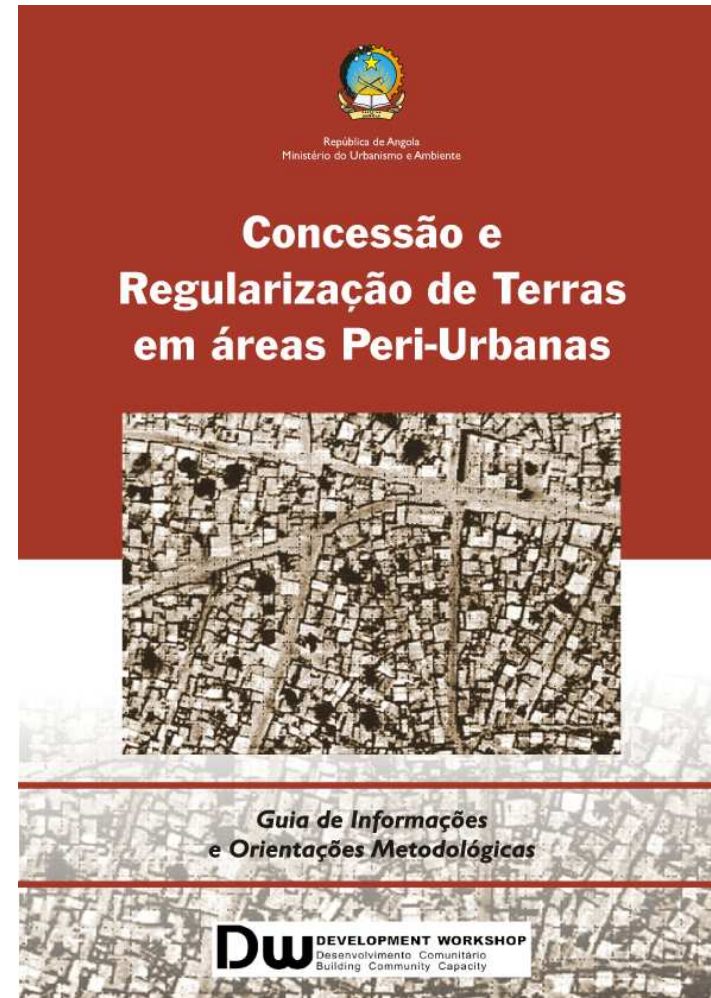
Dw



Outcomes on Influencing Legislation

DECREE FOR LAND TENURE LEGALISATION IN PERI-URBAN AREAS

The aim is to bring Angolan land legislation into closer alignment with international good practice and to improve the land tenure rights of citizens living in peri-urban districts who risk losing their assets under the existing law.



DW



An aerial photograph of a densely packed informal settlement on a hillside. The buildings are small and closely packed, creating a complex, grid-like pattern of dark shapes against a lighter background. The word "Obrigado" is overlaid in the center in a large, white, sans-serif font. At the bottom of the image, there is a row of more organized, multi-story buildings in various colors (yellow, orange, grey) and some greenery. The DW logo is in the bottom left corner.

Obrigado

DW